

ANSWER KEY

SCHOOL : RED SWASTIKA PRIMARY SCHOOL

LEVEL : PRIMARY 6

SUBJECT : SCIENCE

TERM : 2021 PRELIM

Q1	Q2	Q3	Q4	Q5	Q6	Q7	Q8	Q9	Q10
1	3	3	4	4	3	2	4	4	3
Q11	Q12	Q13	Q14	Q15	Q16	Q17	Q18	Q19	Q20
2	4	1	1	1	2	4	3	4	2
Q21	Q22	Q23	Q24	Q25	Q26	Q27	Q28		
2	4	3	2	1	4	1	1		

Q29	<p>a) Warmth</p> <p>b) When the rice is kept at $30^{\circ}C$, bacteria B reproduce the quickest and would have the most number of bacteria B, which would not be suitable for people to eat.</p> <p>c) To ensure that the experiment is fair and that only one variable is changed, the temperature at which the bacteria is kept is changed.</p>
Q30	<p>a) The plant was dispersed by wind and the seed was blown to island Y, and the seed would start to grow on island Y.</p> <p>b) Animal P cannot make its own food so it needs to depend on plants for food.</p> <p>c) Animal P on island Y reproduce and the number of animal P on island increased.</p>

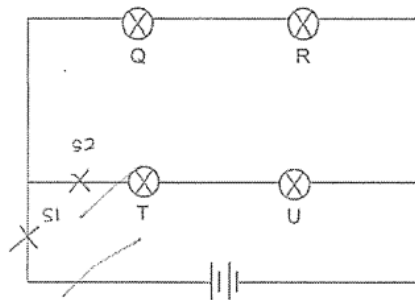
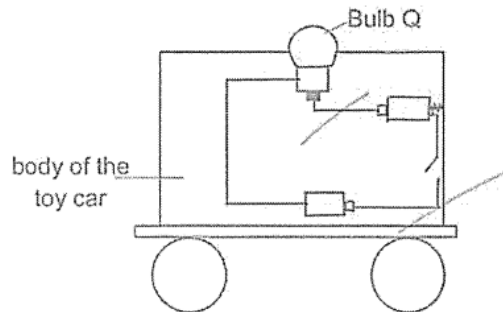
Q31)	<p>a) Warmth, Oxygen and water.</p> <p>b) Observation : The limewater turned cloudy. Conclusion : The seeds take in oxygen and produce carbon dioxide during germination.</p> <p>c) To compare and confirm ensure that the limewater turned cloudy was caused by the seeds giving out carbon dioxide during germination and not by any other variables in the experiment.</p>
Q32)	<p>a) 1) C / D 2) S / P</p> <p>b) They pump blood around the body of the fish and human.</p> <p>c) The blood in a fish transports blood to all parts of the body before reaching organ X while blood in a human transports blood to organ Y before transporting the blood to all parts of the body.</p>
Q33)	<p>a) The greater the amount of light, the less the amount of water in the test tube.</p> <p>b) There is less sunlight and the leaves have to be gigger to take in more sunlight for photosynthesis.</p>
Q34)	<p>a) Photosynthesis is when the leaves trap sunlight with its chlorophyll to convert carbon dioxide and water to produce oxygen and food.</p> <p>b) Photosynthesis requires light.</p> <p>c) The plant will not photosynthesis and the starch in the leaves will be used up by the plants during the 48hours.</p>
Q35)	<p>a) Outer surface of the glass window.</p> <p>b) The warmer water vapour come into contact with the cooler inner surface of the glass window, lost heat and condensed to form water droplets.</p> <p>c) The water droplets would be formed faster. Metal is a better conductor of heat.</p>

d)The cooler water droplets gained heat from the warmer surroundings and evaporated to form water vapour.

a

Q36)

a)



b)

Q37)

a)Gravitational and frictional forces.

b)Make angle a steeper by increasing angle a.

Q38)

a)Iron / Steel / Nickel / Cobalt.

b)Good conductor of electricity.

c)When the switch is closed a closed circuit is formed and electricity can flow, the fixed metal cylinder would be magnetised and become an electromagnet. The contact would be attracted to the electromagnet, making the spring compressed, thus resulting in the metal tray moving downwards.

Q39)	<p>a) Potential → Kinetic → Kinetic</p> <p>b) The sound produced by the wooden block would be softer. There would be lesser potential energy of the ball in the container converted to lesser kinetic energy of the ball when it is released from the container, causing to hit the wooden block and less kinetic energy is transferred to the wooden block and converted lesser sound energy of the wooden block when it topples.</p>
Q40)	<p>a) As the thickness of the layer of air increases, the time taken for the wax to melt increases.</p> <p>b) Air is a poor conductor of heat</p> <p>c) Set-up Q Having a thick layer of flour creates more air bubbles. Since air is a poor conductor of heat, having more air bubbles reduces the rate of heat gained by the ice-cream from the surroundings and melting quickly.</p>